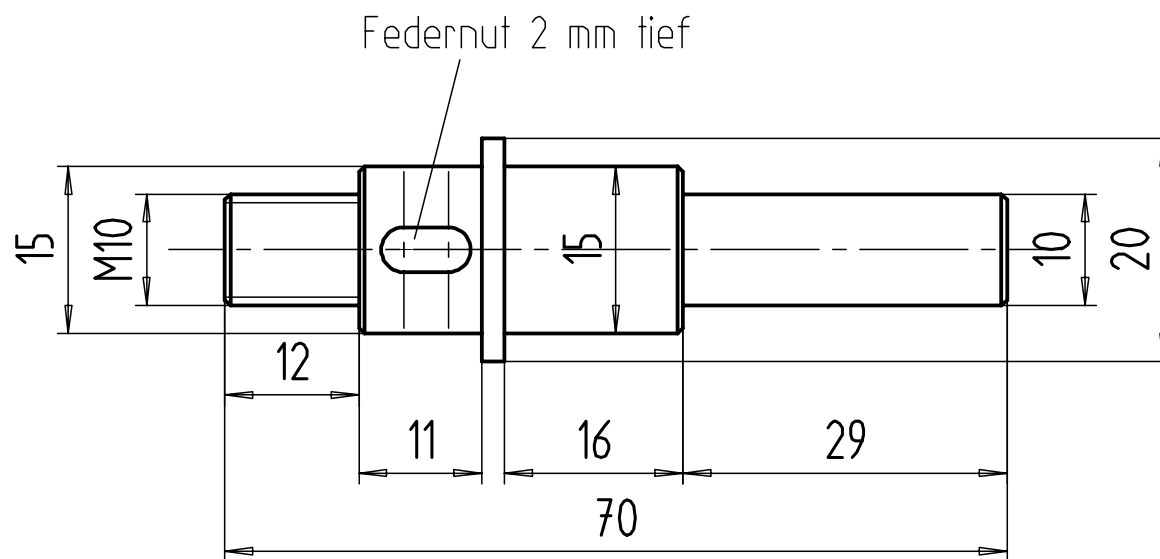


5

Lagerbolzen Kickstarterritzel NSU 501/601 T/TS

www.nsu-greifzu.de 05/2005

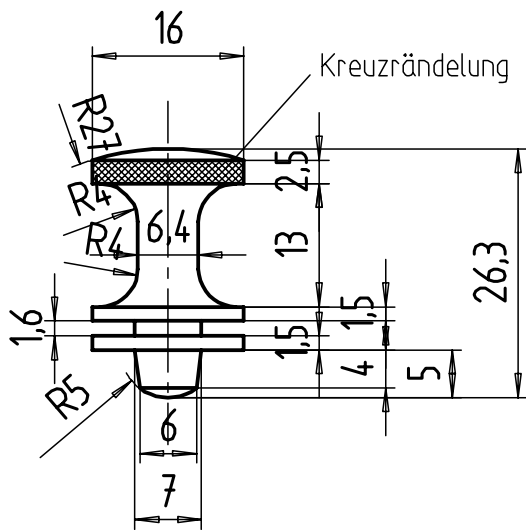


Werkstoff: Silberstahl

Einzelteile Befestigung Tankdeckel NSU 501 TS Bj.1930 Serie 5 + 6

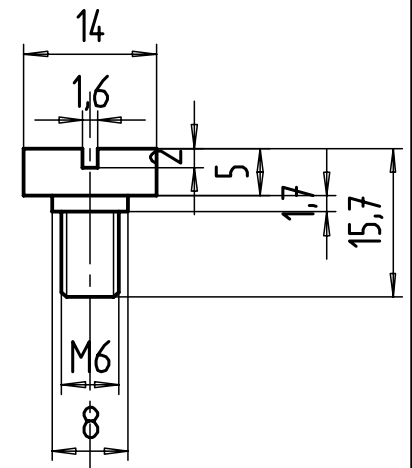
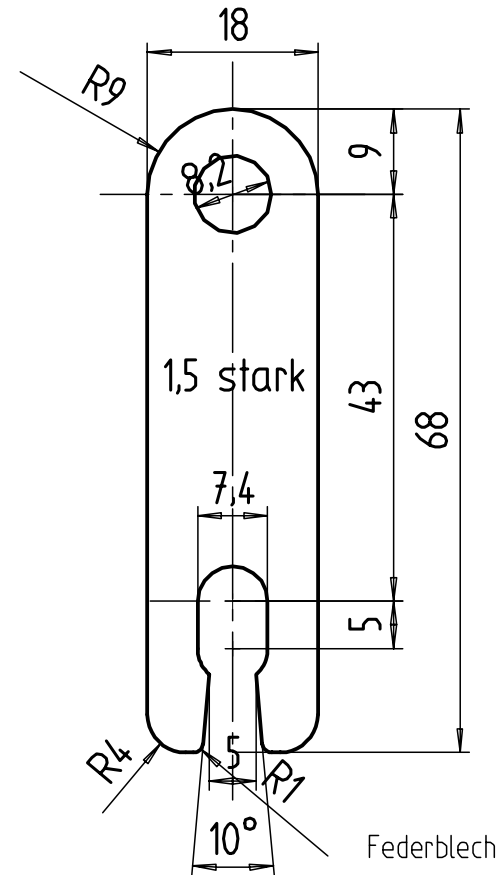
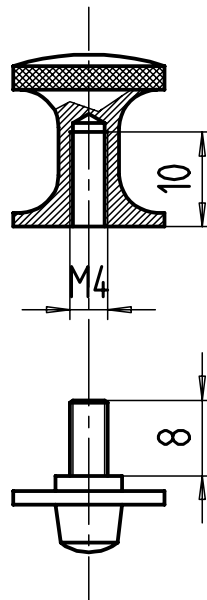
www.nsu-greifzu.de 05/2005

Druckpin



Werkstoff: Automatenstahl

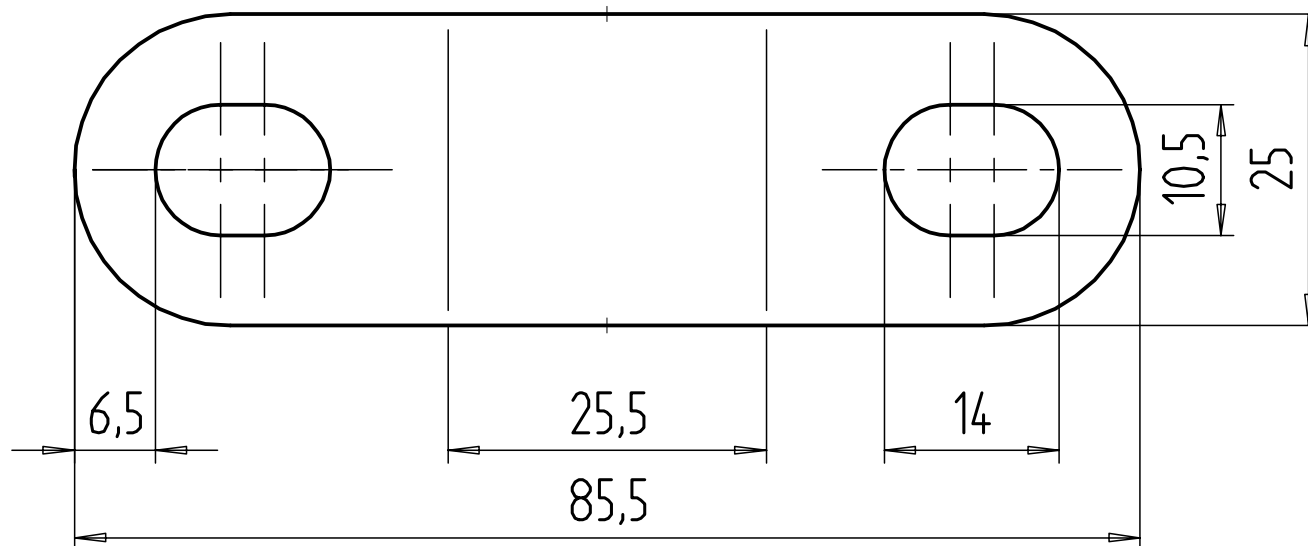
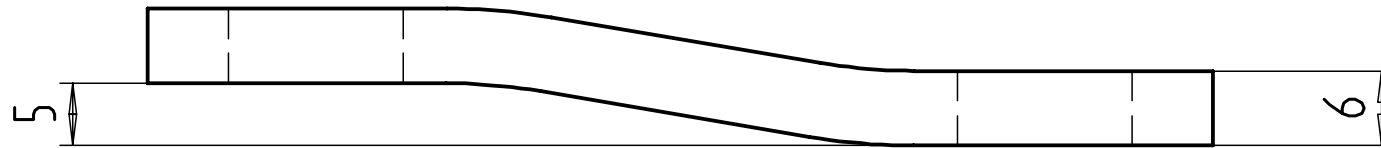
Zusammenbauvorschlag

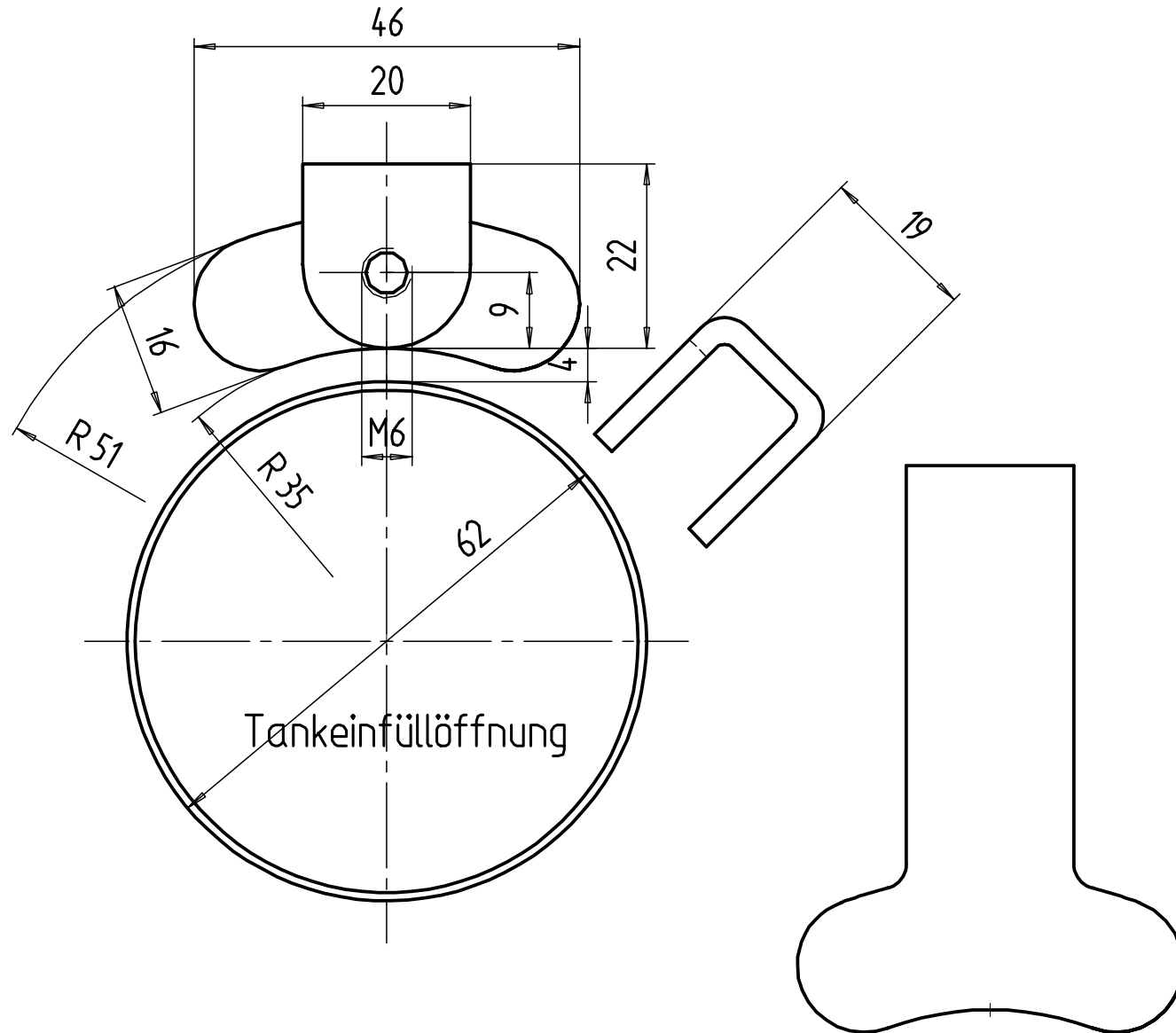


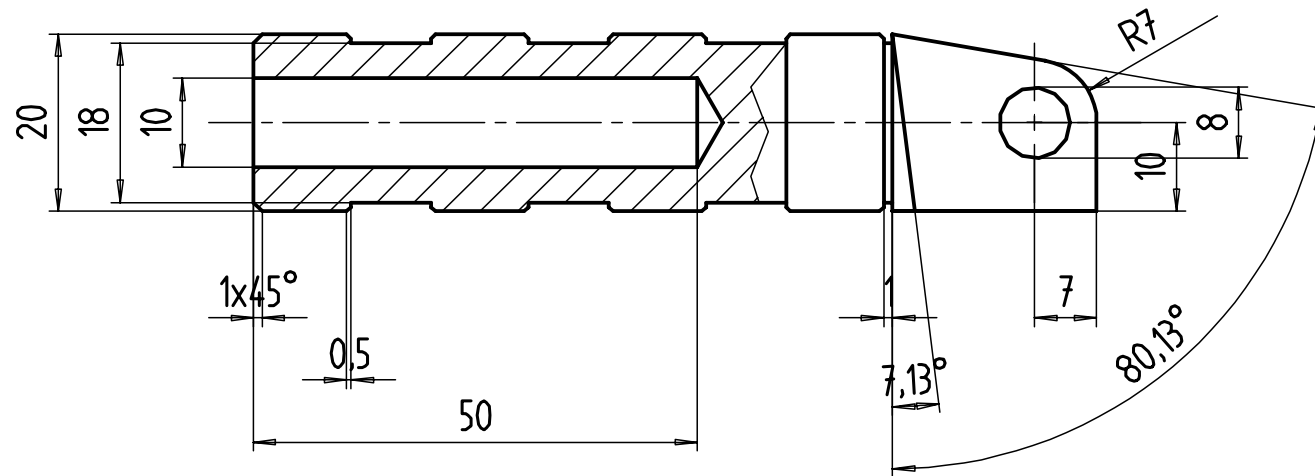
Schraube für Federblech
Werkstoff: V2A

Haltelasche Zylinderkopf NSU 501 T/TS

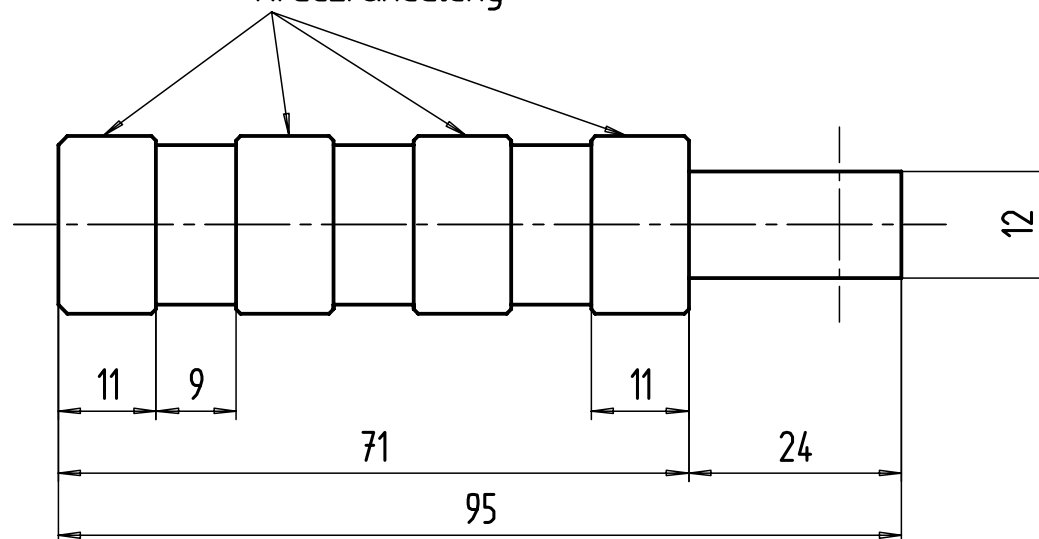
www.nsu-greifzu.de 05/2005







Kreuzrändelung



Werkstoff: Silberstahl

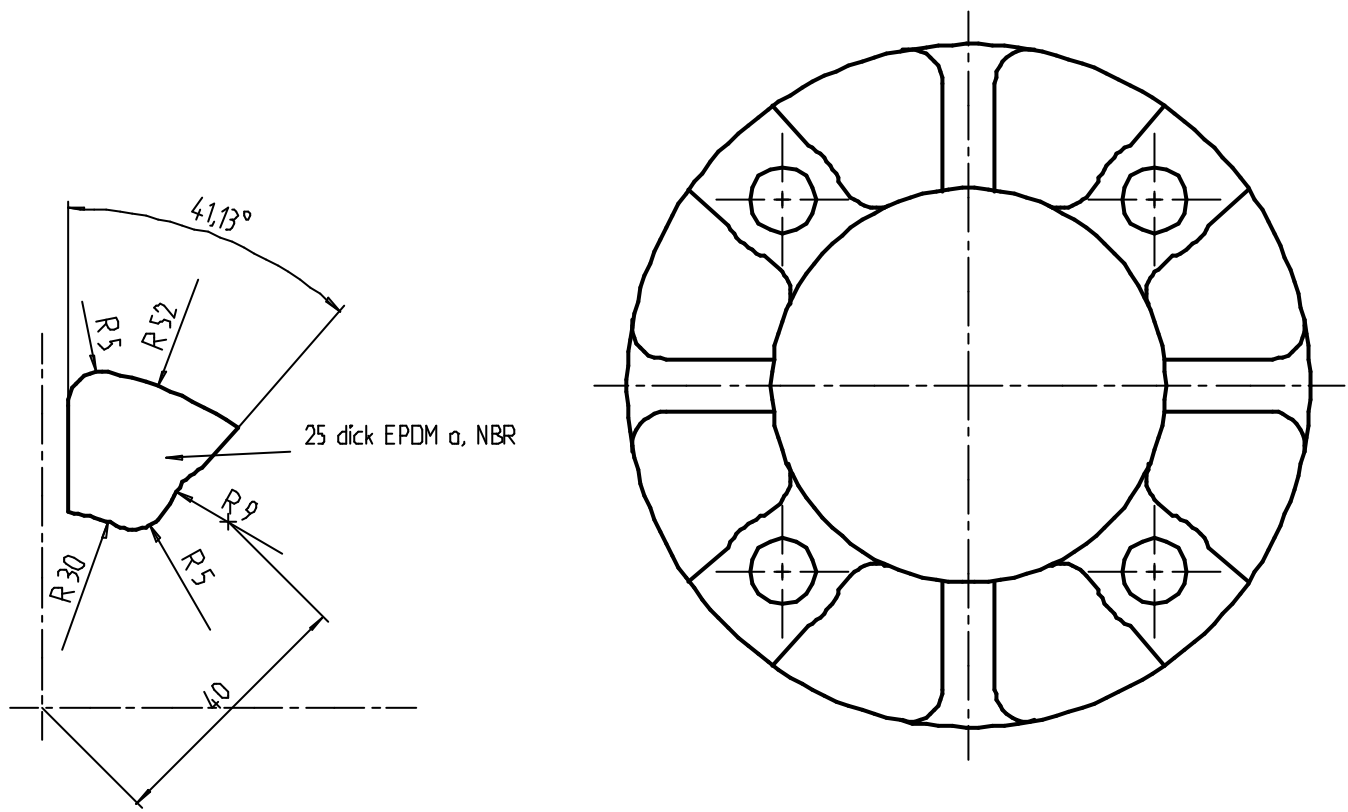
1 2 3 4 5 6

A

B

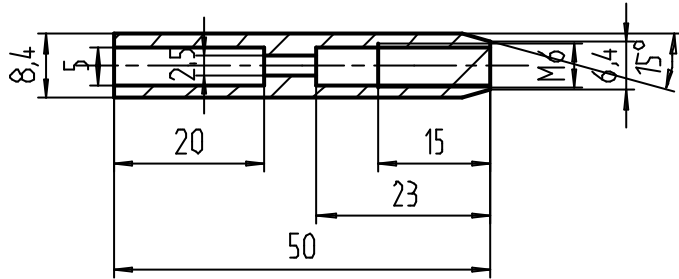
C

D

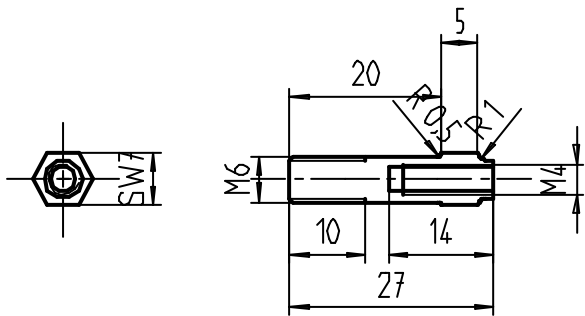


NSU 501 TS: Ruckdämpfer Hinterradantrieb

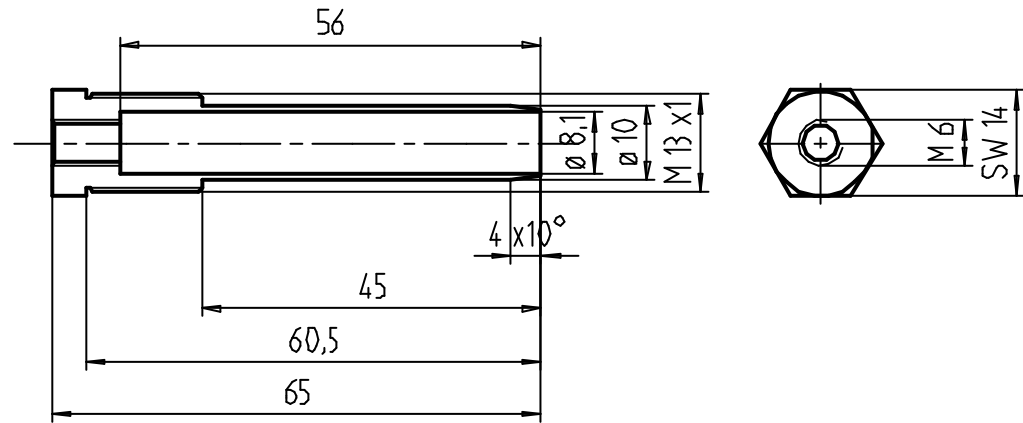
NSU 501 TS Einzelteile Bremsgestänge vorn



Hülse Befestigung Bowdenzug



Zwischenstück Bowdenzughalter-Bremsgestänge



Halter Gabel Vorderbremse 501 TS

